

Two Rivers ART GALLERY

2RiversGallery.org

Newsletter November/December 2023

Horsepower



The importance of horse-power created by clean hydro electric energy cannot be debated. It is the foundation of our entire society fueling industry, agriculture and commerce.

Walter Graham created his painting idea first on a napkin, then a draft of the painting that is now on display at the gallery. He presented the idea to the Chelan County PUD board, who approved it for the Rocky Reach Dam visitor center. The 16'X35' oil painting has become the most viewed beloved icon of many thousands of people all over the country. It is now in storage and will be repaired by a restoration company in Seattle.

The PUD is trying to decide how it can be put in public view.

Month of Giving

As you donate before 'years end' think about Two Rivers Gallery.

We are Wenatchee's art gallery and resource for fun events, education, college assignments and school visitations, and a place for local and regional artists to show and share creative talent of artists with the community.

Send checks to Two Rivers Gallery at 102 North Columbia, Wenatchee, WA 98801.

Join the Hanging Committee

We could use a couple more helpers to hang the show every other month. It might be interesting to learn how the art is hung the way we present it. Contact Sheri Trepina at 406 871-1882, coloursbysheri@gmail.com



Marie Alice Hurst one of a committee who enjoys the work.

Talkin' Shop with Walter

By Brad Brisbane 2023

I took an oil painting class in 1974 from Bob Graves at WVC but only after attending the 1997 Thomas Moran retrospective at Seattle Art Museum did I get serious about painting

Looking for painting advice I was fortunate to meet up with Walter Graham, Wenatchee's most well-known painter. I had seen his murals at the museum, and of course the iconic "Horsepower" mural at Rocky Reach Dam Visitor Center. I believe it to be Wenatchee's most famous painting. Tragically, it was removed from public view several years ago.

I asked Walter about my problem of painting too much detail. He wisely told me to "swing a bigger brush". Hard to detail with a 3/4" brush.

In our conversations Walter offered another valuable tip. He said painters put down a color, then go over it again and again, pushing it around fiddling with it. He said, "lay it down and leave it"! I have found that to be great advice, to keep a painting looking fresh and spontaneous.

Much can be learned about the universal likability of Walter's paintings from his quote: "A painting that looks like a photograph is not a painting. I don't copy the scene - I interpret it. I do something to make it more interesting to people".

Walter was a humble man who was larger than life to those who have the pleasure of viewing his art.

Notes of Interest

- The gallery received a donation of \$1500 from the Peggy Haber-bush Donor Fund. We thank board member Terri Meenach for her generosity in memory of her mother.

- On January 1 the new state tax on all sales increases to 8.8%

- On January 5 the First Friday opens with Russ Hepler featuring a body of work in non objective abstract art.

- We now have two dimmers on two rooms of the gallery. On dark days you may want to use the ceiling lights for those rooms. If lights begin to flicker raise the dimmer bar slightly to give little more light.

- The inventory books are now available to help docents call the artist when a sale is made. Please show that a sale has been made on the inventory sheet. This will help our treasurer Terri Timpe from spending so much time at the gallery doing paperwork that a docent has plenty of time to do.



- We thank Carole Hiatt for offering her brother's local wine collection of 48 bottles to the gallery. Local Public Radio (PBS) is a member of our gallery and has donated another 8 bottles of wine for our First Friday events.

- Help share the work load. We are a gallery of artists who help run the gallery. If you find the time to help a member with his/her workload step forth and it will be appreciated by those who generously give much of their time to make our gallery so successful.

- We need someone who can spend about one hour each month handing our flyers to businesses. It is more fun than work and gives a great sense of helping to get out info about our events. Contact Jan 509-881-1729 jan.gt@icloud.com

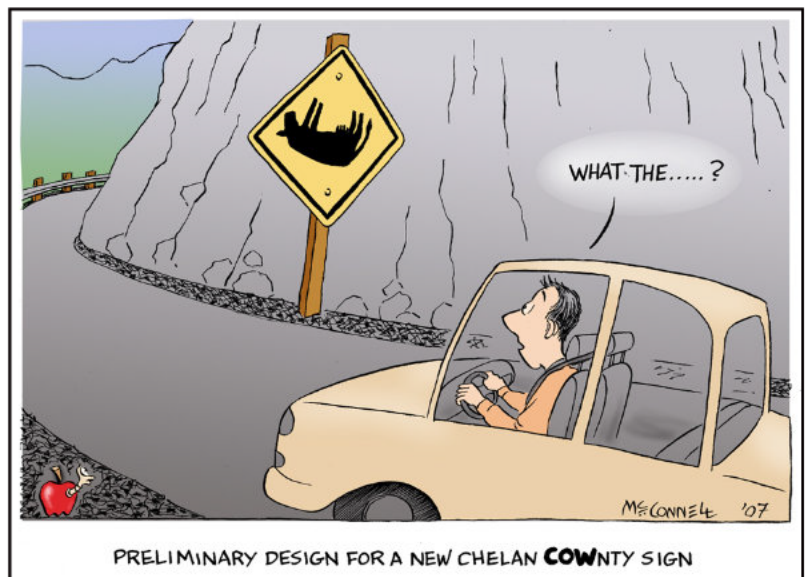
- Walter Graham's large ceramic art work at the entrance of the former North Wenatchee branch of SeaFirst Bank was rescued from destruction before a new bank was built. It will be reinstalled this spring next to the fountain at Wenatchee City Hall. The ceramic mural represented North Central Washington's Industry, Agriculture and Commerce. If the entire piece was saved it would be about 10 feet high and 30 feet long.

- Goodbye to a long time member, Randy Knox has moved to Pendleton OR. He and Jean were active Gallery members for many years. They lived at Avemere Senior Living on Cherry Street. Randy has decided to move to Pendleton OR to be near his daughter since Jean passed. We hope he finds a group of artists at his new home and continues his water-color adventure.

Continued on page 3



Where's ART? (Like Where's Waldo). He is part of our advertising that we are starting up again in March. Art will travel from business to business, staying a week or ten days. When someone sees Art they take a paper from his pocket and bring it to the gallery. We draw for winners each month to see who were the lucky persons. Prizes are awarded by the business. In the past prizes included things like a free hamburger & a drink, free oil change, uncut framed \$2 bills, free personal pizza, etc. Gallery members take turns taking Art to a business on the list. We will run this fun activity for 3 or 4 months. (Your job is to pick up Art, and proceed to the next business on the list) We need two pairs of partners to donate a few minutes each month. Contact Russ Hepler 509-470-5944, hg108@hotmail.com



Inspired by a cow falling off cliff near Manson onto the hood of a car.

• If you use social media we have a fun job for you. Spend a few minutes promoting a fellow member or gallery event each week. Contact Sheri Trepina 406-871-1882

• If you sell a painting you can bring in a new painting as a replacement. If so please, email, or call or text Sheri Trepina with the label information for the new art piece. Colourbysheri@gmail.com 406-871-1882 (Call or text)

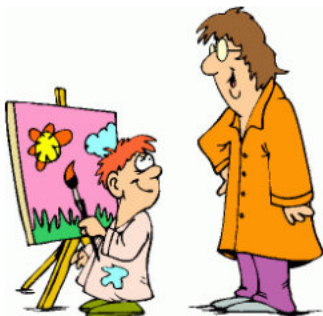
• The Gallery receives new work during our 2 day entry period, every other month on Sunday and Monday. It is at that time that new labels are created for the newly entered work. Please do not bring new artwork in outside of the normal entry dates, unless you are replacing a piece that has been sold. This includes wall and table art pieces.

• Our 5 year Plan for Two Rivers Gallery may be announced at our January Newsletter

All ideas will reflect the goals and purposes of the gallery as stated in our ByLaws, "Preserve and promote the visual arts, art education, workshops and related activities along with exhibiting the work of local artists." We will be taking advantage of donations and grants to set aside funds for future needs and events.

Like to Teach?

A 11 and a 13 year old want to learn more about art and have asked if we have a teacher who would give them lessons. Call Jan at 501-881-1729



TWO RIVERS GALLERY January - February 2024 ART EXHIBITION PROSPECTUS

Check our website - www.2riversgallery.com for our latest show

Exhibit Entry Fee \$20.00
Checks or Cash

Dec. 29-30 **Members Artwork Entry** (Friday & Saturday)
for our January - February Shows **10am-2:00pm**
(The Entry Committee goes home at 2:00pm)

Jan 5 **First Friday Reception** 5-8pm featuring:
Artist Russ Hepler (Non Objective Abstract Art)
Music by guitarist Mike Bills
Local Wines
Hepler's show ends January 28th

Feb. 2 **First Friday Reception** 5-8 pm featuring:

Music by pianist Jeanie McPerson
Local Wines

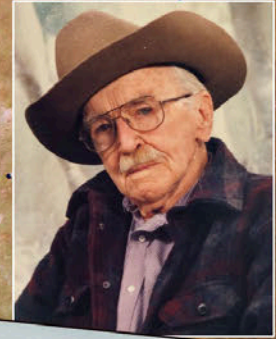
Feb. 24-25 **Members Artwork Entry** (Saturday & Sunday)
for our March-April Show **10:00am-2:00pm**
(The Entry Committee goes home at 2:00pm)

Two Rivers

ART
GALLERY

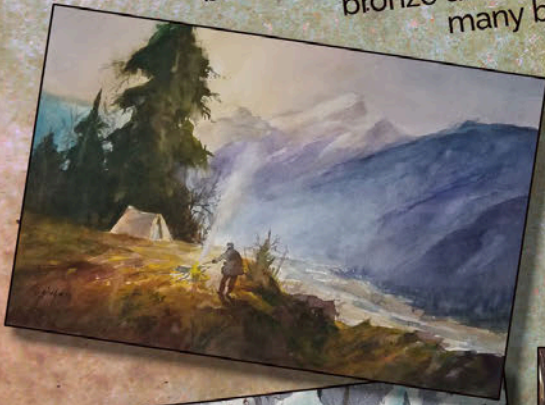
Showing December 1 - 28 The late Walter Graham

First Friday - December 1 5-8pm
Music by harpist Suzanne Grassell and Local Wines



Exhibiting works never before seen by the public!

Wenatchee's most prolific and well known artist, Walter retired from his Chicago business illustrating for the Sears Catalog. He headed West and located in Malaga where he started artistic businesses, sculpture, carving wood doors, designing many banks and nationally known businesses, designing ceramic sculptures and flooring. His paintings are in many homes and a few are at Rocky Reach Dam where he painted the 18X36 foot "Horsepower" seen by thousands of visitors.



Wednesday - Saturday, 11-4 PM Sunday 1-4 pm
102 N. Columbia (bottom of 1st Street) 2riversgallery.org 509-888-9504

Printed by Office Depot