



[2RiversGallery.org](http://2RiversGallery.org)

## Newsletter

February-March 2023

### Gallery Celebrates 14th Anniversary

Two Rivers Gallery open its doors 14 years ago on the first Friday of March. It was an important event for Wenatchee as it was the only place where artists could gather as a group and share their works with the community. Two Rivers started as an affiliate of the North Central Washington Museum and under its non-profit status was able to attract grants from several local sources. The museum & gallery started a First Friday invitation to the community. We got the local wineries involved to offer their wines and with refreshments provided by our membership and a featured artist draw, the monthly event became popular, later involving downtown businesses.

### Twining Humber & SOLA Awards

The [Twining Humber Award](#) is an unrestricted award of \$10,000 given annually to a WA State female-identified visual artist, age 60 or over, who has dedicated 25 years or more to creating art. The award is made possible by a generous gift from the painter Yvonne Twining Humber (1907-2004).

The [SOLA \(Support Old Lady Artists\) Awards](#) are four unrestricted awards of \$5,000 given annually to WA State female-identified visual artists, age 60 or over, who have dedicated 25 years or more to creating art. The SOLA Awards were created by artist Ginny Ruffner.

Guidelines for the Twining Humber Award and SOLA Awards are available on web sites. Applications open on 2/27/2023.

### Plein Air Paint Out

Our Plein Air Paint Out This year will focus on the Apple Capital Loop Trail. It is the 30th anniversary of the trail. Ten years ago the gallery chose the trails 20th year as our subject. As we get closer to the Paint Out we will provide the month & week end for our event.

We hope to have a class available to provide some skills about Plein Air. Brad Brisbane and Sasha Syssoeva Fair will teach the class. More to come as our plans are finalized.

### First Friday - March 3

Allen Gossett will be our featured artist with his fluid art. Allen says he requires his paintings to scream out, "Look at me!" Allen has been showing his art at Two Rivers Gallery for over a year and is owner of Guarantee Appliance in East Wenatchee. He and his son Greg repair appliances.

### April Show - April 7

April at the gallery offers its first trio of outstanding artists who are locally and nationally known. A sample of their works will be presented starting Friday, April 7

### Board News

Your Board of directors signed a 3 year lease with the new building owners, Cory Wray and Cameron Clennon. They helped pay for the carpet with a \$9000 check plus they painted the West Wing, installed led lighting, washed the outside of the windows. Dimmers for the ceiling lights will also be installed.

We are waiting to hear from a grant application placed last month requesting up to \$25,000.

### Remember:

Membership dues are due March 1<sup>st</sup>. \$50 for your individual membership.



"Did you feel any shaking?"

Cartoon compliments of Dan McConnell



# A Look Back Ten Years in Time



ART made his first visit to the Wenatchee Chamber of Commerce.



First Tailgate Art Sale. The community was invited.



Robert Wilson helped students with art assignments.



Fredrick M. Johnson donation of two years of rent help jump start the gallery.



Large leaded glass hung in the gallery windows.



Marti Lyttle stands by her painting of boats.





First Friday music played on the sidewalk by musicians from the Wenatchee Orchestra.



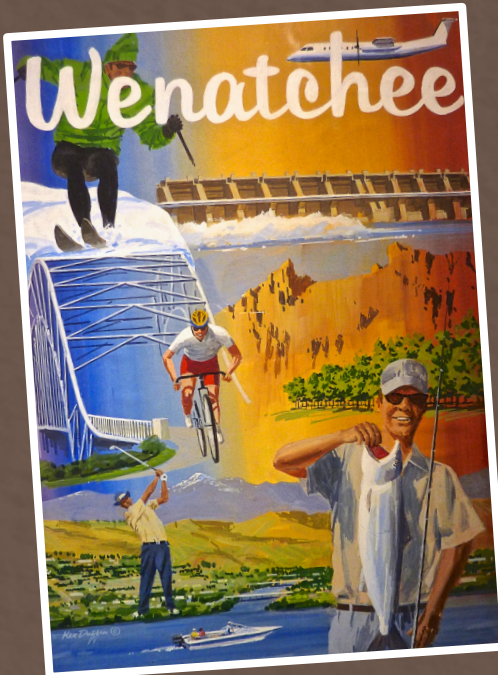
First Friday included refreshments offered by our members.



Jon Browder entered his paper mache "Hogs Watching a Pole Dancer".



Picasso-esk art was part of Terry Johnson's creative talents.



Our shows includes a photo of works by each artist by Phototgrpher Marc Dilley for our website.

Ken Duffin made a poster for promoting Wenatchee.







Nicki Isaacson stands by her show at the Wenatchee Senior Center. Each of our artist could show for two months.



The gallery had a theme show



A young man deciding on which hand carved quail to buy from artist Hank Langeman.



## Judges choose winners in paint-off

Contest celebrated 20th anniversary of the Loop Trail

BY CHRISTINE PRATT  
World staff writer

WENATCHEE — The results are in on Two Rivers Art Gallery's Loop Trail Paint-out, which drew out 10 local artists Saturday to capture a scene of their choice from the Apple Capital Recreation Loop Trail. An abstract pastel by East Wenatchee artist Jen Evenbus of the Wenatchee Row and Paddle Club's historic old boat house captured Best of Show. Ken Duffin captured First Place with his watercolor of a river scene just south of the

park's Linden Tree Area. Second place went to Marijke Keyser of Wenatchee and her oil painting of a small lagoon near the old boat house. The gallery hosted the event to commemorate the Loop Trail's 20th anniversary and get artists out painting in the "plein air" — live from nature — style. Winners, and possibly more of the field of paintings, will be on display at the gallery, 102 N. Columbia St., Wenatchee.

Christine Pratt: 665-1173  
pratt@wenatcheeeworld.com



Ken Duffin's watercolor of a scene just south of the Linden Tree area of Wenatchee Riverfront Park took first place.



This abstract pastel of the old boat house at Wenatchee Riverfront Park by East Wenatchee artist Jen Evenbus captured Best of Show.



Marijke Keyser and her oil painting of a small lagoon near the Linden Tree area at Wenatchee Riverfront Park took second place.

Ten Years ago The Wenatchee World printed an article about the winners of our Plein Air Paint Out.



Jennifer Evenhus, Sheri Trepina and Sasha Syssoeva Fair offer a significant exhibit of work that represents their personal response to 'Her Sense of Place,' a theme inspired by the land, agriculture and people of the Wenatchee Valley. Jen, Sheri and Sasha create unique works of art using oils, pastels and/or mixed media, employing diverse mark-making and color palettes.

Even though all three women create in different styles and mediums, the strong bond with the Valley is a common thread, bringing together the idea of their stories and relationship with the area, literally and metaphorically.

Two Rivers Gallery is pleased to present this unique group show experience in its newly renovated space. All three artists are members of this long-standing non-profit Gallery run by local artist members. Opening reception is Friday, April 7 from 5:00-8:00pm. "Her Sense of Place" hangs through April 2023. Two Rivers Gallery, 102 N. Columbia, Wenatchee.

### Jen Evenhus

Working intuitively, Jen uses bold color, shapes, line and mark-making as metaphor for pungent sage, dried balsamroot, cattails, lily ponds and quaking aspen, inhabitants of the Central Washington terrain. These elements have influenced Jen's art for a lifetime, defining her sense of place in dynamic contemporary and abstract oil and pastel paintings.

Jen uses oil, oil and cold wax and pastel to express her response to her sense of place. She is infatuated with oil and cold wax, addicted to the process of layering and excavating, discovery and experimentation. The history shown on and just below the surface reveals a transformation that begs to be touched. Her pastel work employs her signature

## Her Sense of Place: A Collaboration by Three Women Artists

bold color and painterly mark-making, pushing hues beyond local color to create show-stopping works of art.

Jen's work has received numerous awards over the years, such as Best of Show, President's Award, Juror's Award, Purchase Prize, and Honorable Mention. Jen is a Pastel Society of America Master Pastelist, International Association of Pastel Society Master Circle Member, Northwest Pastel Society Distinguished Pastelist, and a Pastel Society of the West Coast Member. She is also a member of the American Impressionist Society. Jennifer is an established national pastel painting instructor.

### Sheri Trepini

Sheri's work is profoundly connected to her deep ties to the land, its texture, shape and hue. She is recognized for the use of botanical elements in her mixed media collage paintings.

Collecting and using local plants for mark-making, is a unique component in her process. Sheri creates collage layers using watercolor, acrylic and ink applied between hand-made papers. The movement of paint against these collage layers gives her work an abstract quality.

Sheri's work has been nationally recognized through publication and awards. Exhibit articles include the Wenatchee World and the Kalispell Daily Interlake. Sheri's work was selected for Publication in two North Light Books / The Best of Mixed Media Incite 3 and 4. Cloth Paper and Scissors awarded Sheri's botani-

cal collage piece, "Hostas Following the Sun," First Place for Mixed Media Excellence.

Her Sense of Place is nurtured on her family farm in Cashmere. She is the 4th generation in the family to draw inspiration and creativity from the land.

### Sasha Syssoeva Fair

Sasha Syssoeva Fair is a realist painter. She received a classical art education and spent several years drawing casts, painting landscapes outdoors and going to famous art museums. Sasha immigrated to the United States in her early 20s. After living in different parts of the country, she settled in Wenatchee. Sasha found the Wenatchee Valley a most welcoming community and full of compassionate, sincere and hard-working people. She feels that craftsmanship, traditional values and high standards are relevant and important here. This inspires her and creates a sense of place in her artwork.

Sasha's technical skills are based on the experience artists learn from the Old Masters and modern-day conservators. She manages to wrap a classical style around a contemporary local flavor. Some of her works include vanishing landscapes and historical buildings of the region.

This year Sasha turned more towards figurative art. She loved spending time in the Valley orchards working on a painting for the 2023 Apple Blossom Festival Art Print, which features a middle-school girl holding an apple in soft light of an early spring sunset. Sasha finds today's young generation very interesting, humane and full of ethereal beauty. People, their stories and experiences – is what constitutes Sasha's universal language of art, which she speaks fluently with her paint and brushes.



*Grand Re-Opening with newly renovated gallery!*

Two Rivers

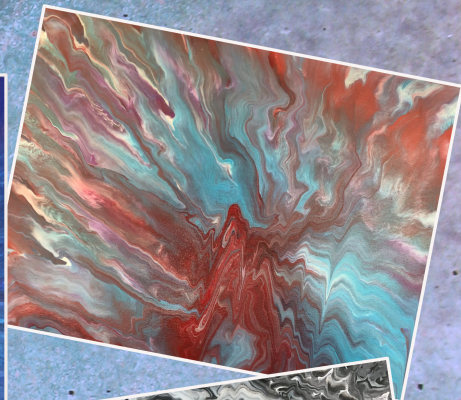
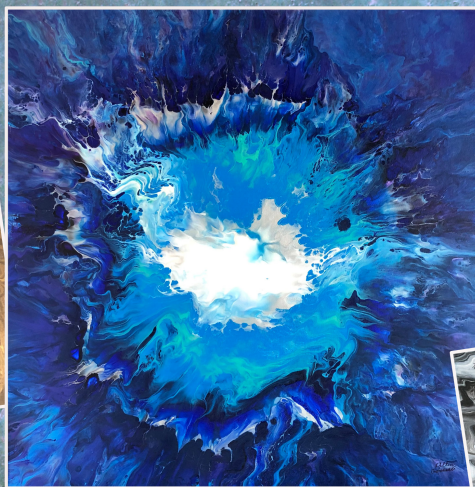
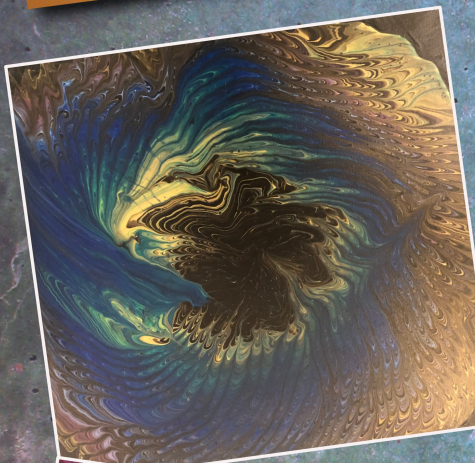
ART

GALLERY

Featuring the art of  
**Allen Gossett**

**First Friday - March 3rd 5-8pm**

Music by Patric Thompson on base & Glenn Isaacson on Piano, Local Wines



I started my painting with a fascination with chain art, from there to all the different forms of fluid art. My goal in each painting is for them to scream look at me I will not be ignored, this is what I require of my paintings.

My work has been shown on facebook but has been seen all over the world through this media. I love creating something new and different.

*Celebrating our 14th Anniversary as Wenatchee's artist-run non-profit art gallery*

Wednesday - Saturday, 11-4 PM Sunday 1-4 pm

102 N. Columbia (bottom of 1<sup>st</sup> Street) [2riversgallery.org](http://2riversgallery.org) 509-888-9504

Printed by Office Depot